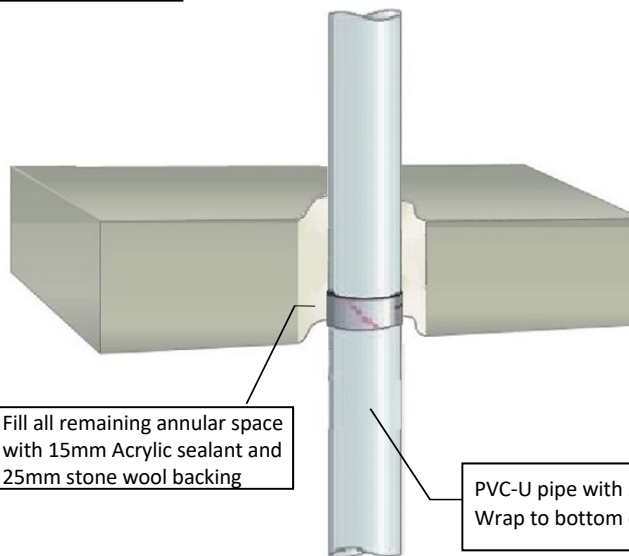


## Protecta FR Wrap - 100mm Concrete Floor Plastic Pipe

### Installation Instructions

1. Before installing Protecta® FR Wrap ensure that the surface of all service penetrations and surrounding construction is free from all loose contaminants, dust and grease.
2. The FR Wrap is to be applied to the bottom of the seal as a single layer or double layer according to the system specification.
3. Fill all remaining annular space between the side of the core-drilled floor slab and the FR Wrap with Protecta FR Acrylic Sealant to a depth of at least 15mm backed with 25mm stone wool 33kg/m<sup>3</sup> (or simply fill with 40mm Acrylic).

Maximum annular space 30mm



Fill all remaining annular space with 15mm Acrylic sealant and 25mm stone wool backing

PVC-U pipe with 50mm FR Wrap to bottom of seal

System/FPA Register ID# FC585

<b>Products</b>	Protecta FR Wrap Protecta FR Acrylic
<b>Application</b>	Fire stopping of plastic pipes in core-drilled rigid floors
<b>Construction</b>	Minimum floor thickness of 100mm and comprise aerated concrete or concrete with a minimum density of 650kg/m <sup>3</sup> .

### Fire & Sound classification:

PVC-U Pipes ≤ Ø110mm FR Wrap 50mm 2 layers  
FRR -/90/90

Sound reduction (seal only)

STC 64

As a part of our policy of on-going product development and testing, we reserve the right to modify, alter or change product specifications without giving notice. All information contained in this document is given in good faith and is provided for guidance only. Any drawings provided are for illustrative purposes only. As Polyseam has no control over the methods or competence of installation and of prevailing site conditions, no warranties, expressed or implied, is intended to be given as to the actual performance of the product mentioned or referred to herein and no liability whatsoever will be accepted for any loss, damage or injury arising from the use of the information given.



Sheet size: <b>A4</b>	Drawn date & no: 19/8/21
--------------------------	-----------------------------

Scale: <b>NTS</b>	Drawn by: K.B
----------------------	------------------